

The Joint Commission Perspectives[®]



Contents



What Is NOT Changing

Results of this project did not involve changes to standards or elements of performance (EPs)

There is also no change to the survey methods;

Table 1. Five Components of a Safety Culture[†] and Related Leadership (LD) Requirements

Assessment	Strengthening Systems	Trust/Intimidating Behavior	Identifying Unsafe Conditions	Accountability/Just Culture

What IS Changing

This project was about improving the survey process.



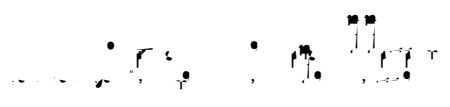
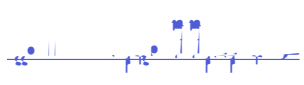


Table 2. Sample Questions for Assessing Safety Culture (continued)

For Leadership	For Staff
<p>1. How do you ensure that safety is a top priority in your organization?</p>	<p>1. How do you ensure that safety is a top priority in your organization?</p>
<p>2. How do you ensure that safety is a top priority in your organization?</p>	<p>2. How do you ensure that safety is a top priority in your organization?</p>
<p>3. How do you ensure that safety is a top priority in your organization?</p>	<p>3. How do you ensure that safety is a top priority in your organization?</p>
<p>4. How do you ensure that safety is a top priority in your organization?</p>	<p>4. How do you ensure that safety is a top priority in your organization?</p>